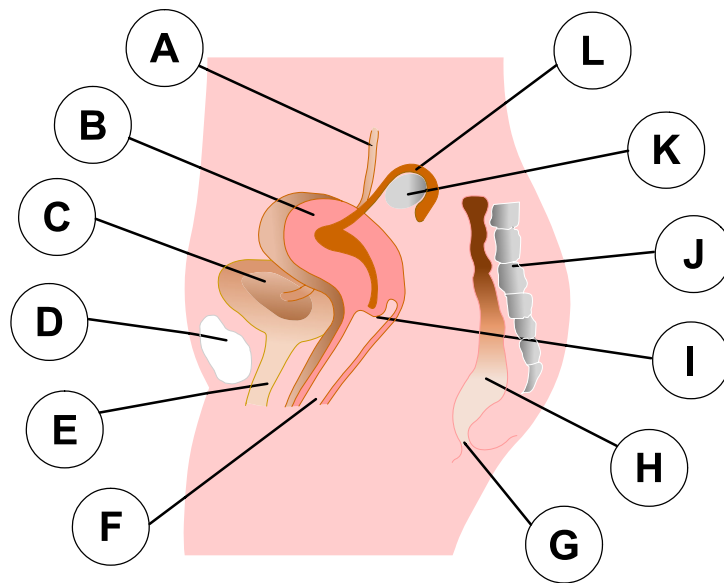


Human Reproduction

Reproduction 2

4. The human reproductive system is designed to produce offspring (babies).
a. Here is a diagram of the female reproductive system. Label the diagram using the descriptions provided.



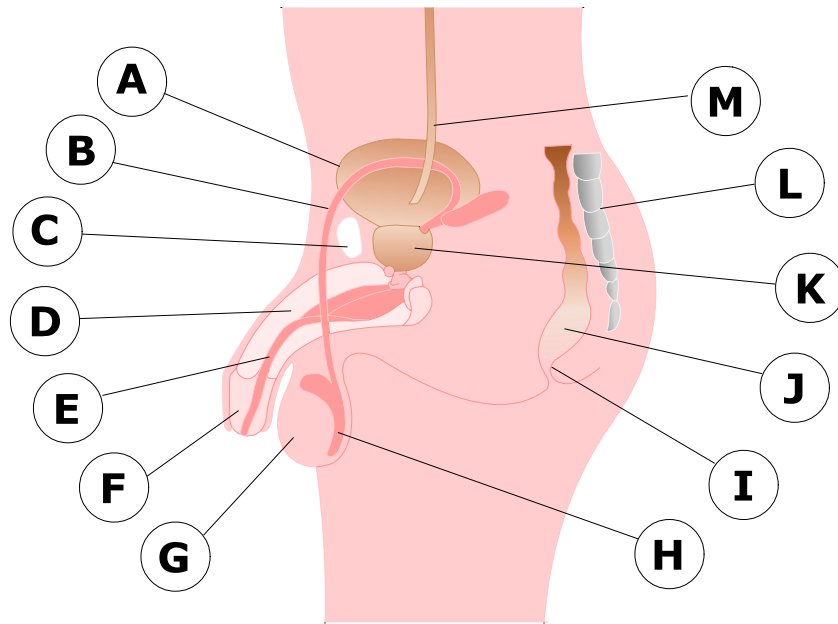
- A _____
- B _____
- C _____
- D _____
- E _____
- F _____
- G _____
- H _____
- I _____
- J _____
- K _____
- L _____

Choose from:

anus, backbone, bladder, Fallopian tube, large intestine, ovary, pelvis, ureter, urethra, uterus, vagina, vulva

Human Reproduction

b. Here is a diagram of the male reproductive system. Label the diagram using the descriptions provided.



- A _____
- B _____
- C _____
- D _____
- E _____
- F _____
- G _____
- H _____
- I _____
- J _____
- K _____
- L _____
- M _____

Choose from:

anus, backbone, bladder, erectile tissue, large intestine, pelvis, penis, prostate gland, scrotum, sperm duct, testis, ureter, urethra

Human Reproduction

5. Complete the following sentences using the word bank.

Word bank

foetus, penis, nine, divide, offspring, cervix, ovum, baby, vagina, blastula, embryo

Reproduction is the production of _____. During copulation, the male _____ enters the female _____ and sperm are deposited at the end of the vagina or _____. Sperm cells swim up the uterus until they meet an _____. If the ovum is fertilised the cells _____ rapidly to form a _____. This continues to divide and specialise to form an _____. The embryo eventually becomes a _____ at which stage it starts to resemble a human baby. After a total of _____ months gestation the _____ is born.